

**BASIC DETAILS**41544--BEARYS SEA SIDE PUBLIC SCHOOL,UDUPI  
Dated : 14/08/2018

<b>SCHOOL NAME</b>	BEARYS SEA SIDE PUBLIC SCHOOL,UDUPI	<b>SCHOOL CODE</b>	41544
<b>ADDRESS</b>	Bearys Sea Side Public School,,	<b>AFFILIATION CODE</b>	830744
<b>PRINCIPAL</b>	MS FIRDOSE	<b>PRINCIPAL'S CONTACT NUMBER</b>	9916894442
<b>PRINCIPAL'S EMAIL ID</b>	bssps@bearyseducation.org	<b>PRINCIPAL'S RETIREMENT DATE</b>	30/11/2026
<b>SCHOOL'S CONTACT NUMBER</b>	0825-4234286	<b>SCHOOL'S EMAIL ID</b>	bssps@bearyseducation.org
<b>SCHOOL'S WEBSITE</b>	<a href="http://www.bearyscheschool.org">http://www.bearyscheschool.org</a>	<b>SCHOOL'S FAX NUMBER</b>	08022273424
<b>LANDMARK NEAR SCHOOL</b>	Government Hospital, Kodi	<b>YEAR OF ESTABLISHMENT</b>	1995
<b>AFFILIATION VALIDITY</b>	2017 TO 2020	<b>AFFILIATION STATUS</b>	PROVISIONAL
<b>NAME OF THE TRUST/SOCIETY/COMPANY REGISTERED WITH</b>	Haji K Mohidin Beary Education Trust	<b>REGISTRATION DATE</b>	05/11/1993
<b>SOCIETY REGISTRATION NUMBER</b>	658/93-94	<b>REGISTRATION VALIDITY</b>	PERMANENT REGISTRATION
<b>NOC ISSUING AUTHORITY</b>	Deputy Secretary (AFF)	<b>NOC ISSUING DATE</b>	11/04/2017
<b>NO OBJECTION CERTIFICATE</b>	<a href="#">VIEW (PdfHandler.aspx?FileName=G:\cbse\2018\oasisdemo\noc\41544.PDF)</a>	<b>NON PROPRIETY CHARACTER AFFIDAVIT/NON PROFIT COMPANY AFFIDAVIT</b>	<a href="#">VIEW (PdfHandler.aspx?FileName=G:\cbse\2018\oasisdemo\affidavit\41544.PDF)</a>

**FACULTY DETAILS**

41544--BEARYS SEA SIDE PUBLIC SCHOOL,UDUPI  
Dated : 14/08/2018

TOTAL NUMBER OF TEACHERS (ALL CLASSES)	22	NUMBER OF PGTs	7
NUMBER OF TGTs	5	NUMBER OF PRTs	6
NUMBER OF PETs	1	OTHER NON-TEACHING STAFF	4
NUMBER OF MANDATORY TRAINING QUALIFIED TEACHERS	3	NUMBER OF TRAININGS ATTENDED BY FACULTY SINCE LAST YEAR	2

**STUDENT DETAILS**

41544--BEARYS SEA SIDE PUBLIC SCHOOL,UDUPI

Dated : 14/08/2018

CLASS	TOTAL NUMBER OF SECTIONS	TOTAL NUMBER OF INTAKE	TOTAL NUMBER OF STUDENTS
1	1	40	42
2	1	40	39
3	1	40	32
4	2	80	45
5	1	40	41
6	1	40	39
7	1	40	43
8	1	40	30
9	1	40	33
10	1	40	30
11	0	0	0
12	0	0	0

**ACADEMIC DETAILS**

**SUBJECTS OFFERED FOR CLASS 10**

- 101---ENGLISH COMM.
- 041---MATHEMATICS
- 085---HINDI COURSE-B
- 086---SCIENCE
- 087---SOCIAL SCIENCE

**SUBJECTS OFFERED FOR CLASS 12**

000---NA

**INFRASTRUCTURE DETAILS**

41544--BEARYS SEA SIDE PUBLIC SCHOOL,UDUPI

Dated : 14/08/2018

TOTAL NUMBER OF SITES OF SCHOOL	1	TOTAL NUMBER OF BUILDING BLOCKS	1
TOTAL AREA OF SCHOOL IN SQUARE METRES	13314	TOTAL NUMBER OF PLAYGROUNDS	2
TOTAL AREA OF PLAYGROUND IN SQUARE METRES	7205	TOTAL NUMBER OF ROOMS	25
TOTAL NUMBER OF SMALL-SIZED ROOMS	2	TOTAL NUMBER OF MEDIUM-SIZED ROOMS	20
TOTAL NUMBER OF LARGE-SIZED ROOMS	3	TOTAL NUMBER OF MALE REST ROOM	4
TOTAL NUMBER OF FEMALE REST ROOM	4	NUMBER OF GIRLS' TOILET	12
NUMBER OF BOYS' TOILET	10	NUMBER OF TOILETS FOR DIFFERENTLY ABLED PERSONS	1
NUMBER OF WASHROOMS FOR FEMALE STAFF	1	NUMBER OF WASHROOMS FOR MALE STAFF	1
TOTAL NUMBER OF LIBRARIES	1	NUMBER OF LABORATORIES	4
TOTAL NUMBER OF STUDENT CANTEENS	1	TOTAL NUMBER OF STAFF CANTEENS	1
NUMBER OF WATER PURIFIERS/ROs	4	NUMBER OF AUDITORIUMS	1

<b>TOTAL NUMBER OF BUSES OWNED</b>	4	<b>TOTAL NUMBER OF BUSES HIRED</b>	0
<b>TOTAL NUMBER OF VANS/MATADORS</b>	3	<b>TOTAL NUMBER OF DRIVERS</b>	7
<b>NUMBER OF FEMALE ATTENDANTS FOR BUS DUTY</b>	4	<b>NUMBER OF ACTIVITY ROOMS</b>	4
<b>NAME OF TRANSPORT COORDINATOR</b>	Reshma Dsouza	<b>TRANSPORT COORDINATOR CONTACT</b>	9448618329
<b>BUILDING SAFETY CERTIFICATE</b>	VIEW (PdfHandler.aspx?FileName=G:\cbse\2018\oasisdemo\building\41544.PDF)	<b>TRANSPORT SAFETY CERTIFICATE</b>	VIEW (PdfHandler.aspx?FileName=G:\cbse\2018\oasisdemo\transport\41544.PDF)

**LOCATION DETAILS**

NEAREST NATIONALISED BANK	Vijaya Bank	DISTANCE OF BANK FROM SCHOOL IN KM	3
NEAREST BUS STATION	Kundapura	DISTANCE OF BUS TERMINAL FROM SCHOOL IN KM	4
NEAREST RAILWAY STATION	Moodlakatte	DISTANCE OF RAILWAY STATION FROM SCHOOL IN KM	7
NEAREST AIRPORT	Mangaluru Airport	DISTANCE OF AIRPORT FROM SCHOOL IN KM	98
NEAREST HOSPITAL	Government Hospital, Kodi	DISTANCE OF HOSPITAL FROM SCHOOL IN KM	0.5
NEAREST POLICE STATION	Kundapura Police Station	DISTANCE OF POLICE STATION FROM SCHOOL IN KM	4
NEAREST METRO STATION		DISTANCE OF METRO FROM SCHOOL IN KM	

**OTHER VITAL INFORMATION**41544--BEARYS SEA SIDE PUBLIC SCHOOL,UDUPI  
Dated : 14/08/2018

<b>10th BOARD PASS PERCENTAGE (2014/2015/2016)</b>	100/92.85/92.5	<b>12th BOARD PASS PERCENTAGE (2014/2015/2016)</b>	0/0/0
<b>NAME OF WELLNESS/ACTIVITY TEACHER</b>	YES	<b>NAME OF GRIEVANCE/COMPLAINT REDRESSAL OFFICER</b>	Reshma Dsouza
<b>CONTACT NUMBER OF GRIEVANCE/COMPLAINT REDRESSAL OFFICER</b>	9448618329	<b>EMAIL ID OF GRIEVANCE/COMPLAINT REDRESSAL OFFICER</b>	bssps@bearyseducation.org
<b>NAME OF HEAD OF SEXUAL HARASSMENT COMMITTEE</b>	Reshma Dsouza	<b>CONTACT NUMBER OF HEAD OF SEXUAL HARASSMENT COMMITTEE</b>	9448618329
<b>EMAIL ID OF HEAD OF SEXUAL HARASSMENT COMMITTEE</b>	bssps@bearyseducation.org	<b>NAME OF CONTACT PERSON IN CASE OF EMERGENCY</b>	Haji Master Mahamood
<b>CONTACT NUMBER OF CONTACT PERSON IN CASE OF EMERGENCY</b>	9880909886	<b>EMAIL ID OF CONTACT PERSON IN CASE OF EMERGENCY</b>	bssps@bearyseducation.org
<b>TOTAL NUMBER OF DOCTORS IN SCHOOL CLINIC</b>	0	<b>TOTAL NUMBER OF NURSES IN SCHOOL CLINIC</b>	0
<b>TOTAL NUMBER OF BEDS IN SCHOOL CLINIC</b>	1	<b>LEVEL OF INVOLVEMENT OF SCHOOL IN CBSE ACTIVITIES</b>	NEUTRAL
<b>DO THE TEACHERS GET PROPER GRADE LIKE PGT/TGT AS PER THE CLASSES THEY ARE ENTITLED TO TEACH?</b>	YES	<b>DO THE TEACHERS AND STAFF GET THEIR SALARY WITHIN FIRST WEEK OF THE MONTH?</b>	YES
<b>DOES THE SCHOOL HAS EPF FACILITY FOR STAFF</b>	YES	<b>EPF REGISTRATION NUMBER</b>	KN/UDP/1530766/000



<b>MODE OF SALARY PAYMENT</b>	bankpayment	<b>NAME OF BANK WITH SALARY ACCOUNT</b>	Vijaya Bank
<b>ARE THE SCHOOL ACCOUNTS AUDITED REGULARLY?</b>	YES	<b>PARENT TEACHERS ASSOCIATION AS PER NORMS</b>	YES
<b>ACADEMIC SESSION</b>	<b>JUNE TO MARCH</b>	<b>VACATION PERIOD</b>	<b>APRIL TO MAY</b>
<b>AUDITED BALANCE SHEET OF SCHOOL</b>	VIEW (PdfHandler.aspx? FileName=G:\cbse\2018 \oasisdemo\balance\41544.pdf)	<b>STAFF STATEMENT OF SCHOOL</b>	VIEW (PdfHandler.aspx? FileName=G:\cbse\2018 \oasisdemo\staff\41544.pdf)
<b>INCOME AND EXPENDITURE STATEMENT</b>	VIEW (PdfHandler.aspx? FileName=G:\cbse\2018 \oasisdemo\income\41544.pdf)	<b>ACADEMIC CALENDAR OF SCHOOL</b>	VIEW (PdfHandler.aspx? FileName=G:\cbse\2018 \oasisdemo\academic\41544.pdf)

**BEST PRACTICES OF SCHOOL**

Daily Morning prayer, Thought for the Day, Briefing about important national and international days and important daily news.

## FEE STRUCTURE OF SCHOOL

41544--BEARYS SEA SIDE PUBLIC SCHOOL,UDUPI

Dated : 14/08/2018

CLASS	ADMISSION FEE (in Rupees)	TUITION FEE (in Rupees)	YEARLY DEVELOPMENT CHARGES (in Rupees)	ANNUAL/MONTHLY OTHER CHARGES FOR OTHER FACILITIES (in Rupees)
PRIMARY	5900	650	0	340
MIDDLE	6900	750	0	360
SECONDARY	6900	750	0	440
SENIOR SECONDARY	0	0	0	0

# PHOTO OF SCHOOL

41544--BEARYS SEA SIDE PUBLIC SCHOOL,UDUPI  
Dated : 14/08/2018

## SCHOOL PHOTOS

### GEO-TAGGED PHOTO



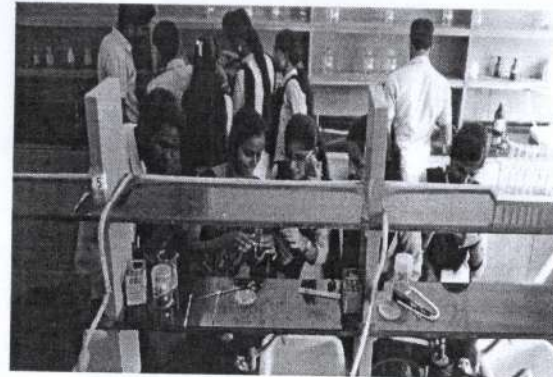
### PHYSICS LAB PHOTO



### PLAYGROUND PHOTO



### CHEMISTRY LAB PHOTO



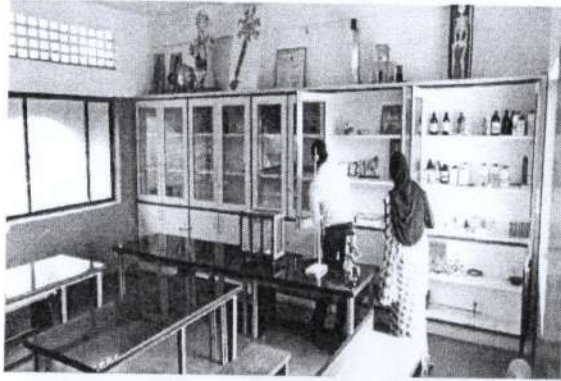
**LIBRARY PHOTO**



**BIOLOGY LAB PHOTO**



**SCIENCE LAB PHOTO**



## SCHOOL DETAILS

<b>SCHOOL NAME</b>	BEARYS SEA SIDE PUBLIC SCHOOL,UDUPI	<b>ADDRESS OF THE SCHOOL</b>	Bearys Sea Side Public School,,
<b>SCHOOL CODE</b>	41544	<b>AFFILIATION CODE</b>	830744

## BASIC INFORMATION

**NAME OF THE PRINCIPAL**

**PRINCIPAL'S EMAIL ID**

**PRINCIPAL'S MOBILE NUMBER**

**PRINCIPAL'S RETIREMENT DATE**

**SCHOOL'S CONTACT NUMBER**

**SCHOOL'S EMAIL ID**

**SCHOOL'S WEBSITE**

**SCHOOL'S FAX NUMBER**

**LANDMARK NEAR SCHOOL**

**YEAR OF ESTABLISHMENT OF SCHOOL**

**AFFILIATION GRANT YEAR**

2017

**AFFILIATION VALIDITY**

2020

**AFFILIATION STATUS**

PROVISIONAL

**RECOGNITION LETTER/NOC ISSUING AUTHORITY**

Deputy Secretary (AFF)

**RECOGNITION LETTER/NOC ISSUING DATE**

11/04/2017

**UPLOAD RECOGNITION LETTER/NO OBJECTION CERTIFICATE (NOC)(PDF WITH SIZE LESS THAN 1MB)**

Browse...

**MANAGEMENT DETAILS**

**NAME OF THE TRUST/SOCIETY/COMPANY REGISTERED**

Haji K Mohidin Beary Education Trust

**SOCIETY REGISTRATION NUMBER**

658/93-94

**REGISTRATION DATE**

05/11/1993

**REGISTRATION VALIDITY**  **PERMANENT REGISTRATION**

PERMANENT

**UPLOAD COPY OF NON PROPRIETY CHARACTER/NON PROFIT COMPANY AFFIDAVIT(PDF WITH SIZE LESS THAN 1MB)**

Browse...

**UPLOAD DETAILS OF CHAIRMAN & MEMBERS OF TRUST/SOCIETY(PDF WITH SIZE LESS THAN 1MB)**

Browse...

SAVE AND CONTINUE

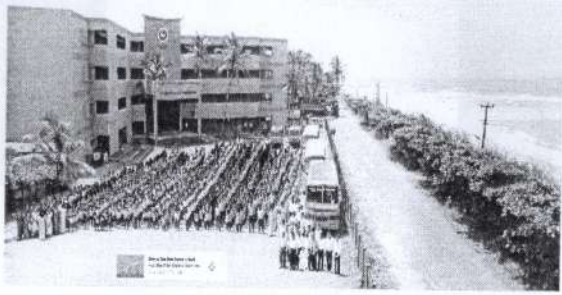
Copyright © 2018 CBSE (<http://cbse.nic.in/newsite/index.html>). All rights reserved.

Version 2.0

---

**UPLOAD GEO-TAGGED PHOTO OF SCHOOL BUILDING**

**UPLOAD GEO TAGGED SCHOOL PIC (LESS THAN 2MB)** What is a geo-tagged photo? ([https://en.wikipedia.org/wiki/Geotagged\\_photograph](https://en.wikipedia.org/wiki/Geotagged_photograph))



LATITUDE : 13.613883 LONGITUDE : 74.6712774

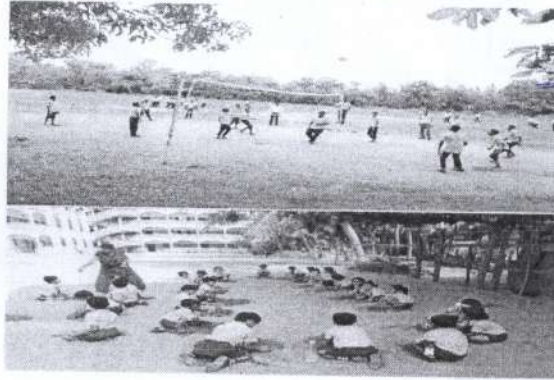
---

**UPLOAD PHOTO OF SCHOOL PLAYGROUND / LIBRARY**



UPLOAD SCHOOL PLAYGROUND PHOTO (LESS THAN 1MB)

Browse...



UPLOAD SCHOOL LIBRARY PHOTO (LESS THAN 1MB)

Browse...



---

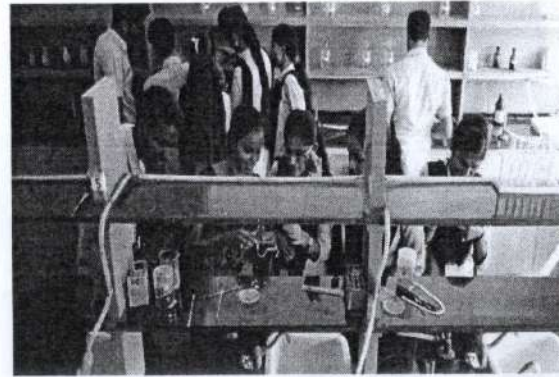
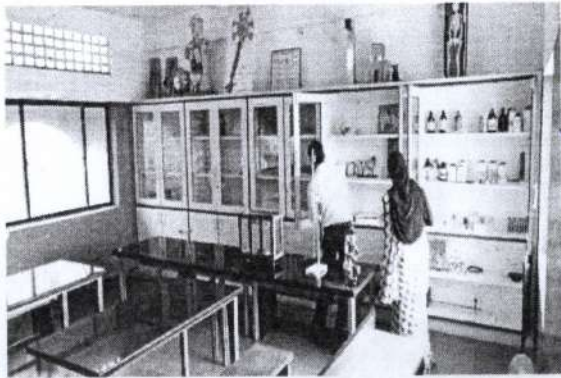
### UPLOAD PHOTOS OF SCHOOL LABORATORIES

UPLOAD COMPOSITE SCIENCE LABORATORY PHOTO (LESS THAN 1MB)

Browse...

UPLOAD CHEMISTRY LABORATORY PHOTO (LESS THAN 1MB)

Browse...



**UPLOAD PHYSICS LABORATORY PHOTO (LESS THAN 1MB)**

Browse...

**UPLOAD BIOLOGY LABORATORY PHOTO (LESS THAN 1MB)**

Browse...

7



---

**UPLOAD VIDEO CLIP OF SCHOOL**

**UPLOAD VIDEO CLIP (MP4 FILES LESS THAN 2MB)**

41544

SUBMIT

**FACULTY DETAILS**

**TOTAL NUMBER OF TEACHERS (ALL CLASSES)**

22

**NUMBER OF PGTs**

7

**NUMBER OF TGTs**

5

**NUMBER OF PRTs**

6

**NUMBER OF PETs**

1

**OTHER NON-TEACHING STAFF**

4

**NUMBER OF TEACHERS ATTENDED MANDATORY TRAINING**

3

**NUMBER OF TRAININGS ATTENDED IN PREVIOUS & CURRENT YEAR**

2

SAVE AND CONTINUE

762---BASIC  
HORTICULTURE.

796---WEB  
APPLICATIONS

799---ELEMENTARY STR  
MEC

800---SECURITY

663---FUND OF NURSING  
II

664---COMM.HEALTH  
NUR II

665---MAT&CHILD H.NUR  
II

609---TYPOGRAPHY &CA  
(H)

SUBMIT

**PHYSICAL INFRASTRUCTURE**

**TOTAL NUMBER OF SITES OF SCHOOL**

1

**TOTAL AREA OF SCHOOL IN SQUARE METRES**

13314

**TOTAL NUMBER OF PLAYGROUNDS IN SCHOOL**

2

**TOTAL AREA OF PLAYGROUND IN SQUARE METRES**

7205

**NUMBER OF BUILDING BLOCKS OF SCHOOL**

1

**DOES THE SCHOOL HAS A BOUNDARY WALL?**

YES

**TOTAL NUMBER OF ROOMS**

25

**TOTAL NUMBER OF SMALL-SIZED ROOMS**

2

**TOTAL NUMBER OF MEDIUM-SIZED ROOMS**

20

**NUMBER OF LARGE-SIZED ROOMS**

3

**NUMBER OF AUDITORIUMS**

1

**TOTAL NUMBER OF ACTIVITY ROOMS**

4

**TOTAL NUMBER OF DIGITAL CLASSROOMS**

1

**TOTAL NUMBER OF LIFTS/ELEVATORS**

0

17

**TOTAL NUMBER OF LIBRARIES**

1

**TOTAL NUMBER OF FEMALE REST ROOMS**

4

**TOTAL NUMBER OF CANTEENS**

1

**TOTAL NUMBER OF TOILETS**

22

**TOTAL NUMBER OF BOYS' TOILETS**

10

**TOTAL NUMBER OF WASHROOMS FOR FEMALE STAFF**

1

**TOTAL NUMBER OF LABORATORIES**

4

**TOTAL NUMBER OF MALE REST ROOMS**

4

**NUMBER OF STAFF CANTEENS**

1

**NUMBER OF GIRLS' TOILETS**

12

**NUMBER OF TOILETS FOR DIFFERENTLY ABLED PERSONS**

1

**NUMBER OF WASHROOMS FOR MALE STAFF**

1

---

**FACILITIES DETAILS**



NUMBER OF WATER PURIFIERS/ROs AVAILABLE IN SCHOOL

4

DOES THE SCHOOL HAS A STRONG ROOM?

YES

DOES THE SCHOOL HAS SPORTS FACILITY?

YES

DOES THE SCHOOL HAS INDOOR GAMES FACILITY?

YES

DOES THE SCHOOL HAS A SWIMMING POOL?

NO

DOES THE SCHOOL HAS DANCE/MUSIC FACILITY?

YES

DOES THE SCHOOL HAS A GYMNASIUM?

NO

DOES THE SCHOOL HAS HOSTEL FACILITY?

YES

TOTAL NUMBER OF COMPUTERS (ALL COMPUTER LABS COMBINED)

25

DOES THE SCHOOL HAS A WEB SERVER?

NO

IS YOUR SCHOOL WI-FI ENABLED?

YES

PROVISION OF WEB BASED LEARNING PROGRAMS?

YES

DOES THE SCHOOL HAS CLINIC FACILITY?

YES

IS THE SCHOOL EXAMINATION CENTER OF CBSE?

NO

DOES THE SCHOOL HAS FIRE ALARMS?

DOES THE SCHOOL HAS RAMPS FOR PHYSICALLY HANDICAPPED?

17

NO

YES

DOES THE SCHOOL HAS WATER SPRINKLERS?

DOES THE SCHOOL HAS FIRE EXTINGUISHERS?

NO

YES

ARE CCTV CAMERAS INSTALLED IN AREAS OF SECURITY CONCERN?

ARE SUFFICIENT NUMBER OF GUARDS EMPLOYED FOR SAFETY?

YES

YES

UPLOAD BUILDING SAFETY CERTIFICATE(PDF WITH SIZE LESS THAN 1MB)

Browse...

### TRANSPORT FACILITIES DETAILS

TOTAL NUMBER OF BUSES OWNED BY SCHOOL

4

TOTAL NUMBER OF DRIVERS

7

TOTAL NUMBER OF BUSES HIRED BY SCHOOL

0

NAME OF TRANSPORT COORDINATOR

Reshma Dsouza

TOTAL NUMBER OF VANS/MINI BUSES/MATADORS

3

CONTACT NUMBER OF TRANSPORT COORDINATOR

9448618329

NUMBER OF FEMALE ATTENDANTS FOR TRANSPORT DUTY

UPLOAD TRANSPORT SAFETY CERTIFICATE(PDF WITH SIZE LESS THAN 1MB)

**LOCATION DETAILS**

**NAME OF NEAREST NATIONALISED BANK**

Vijaya Bank

**DISTANCE OF BANK FROM SCHOOL (IN KM)**

3

**NAME OF NEAREST BUS STATION**

Kundapura

**DISTANCE OF BUS TERMINAL FROM SCHOOL (IN KM)**

4

**NAME OF NEAREST RAILWAY STATION**

Moodlakatte

**DISTANCE OF RAILWAY STATION FROM SCHOOL (IN KM)**

7

**NAME OF NEAREST AIRPORT**

Mangaluru Airport

**DISTANCE OF AIRPORT FROM SCHOOL (IN KM)**

98

**NEAREST HOSPITAL**

Government Hospital, Kodi

**DISTANCE FROM NEAREST HOSPITAL**

0.5

**NEAREST POLICE STATION**

Kundapura Police Station

**DISTANCE FROM NEAREST POLICE STATION**

4

**NEAREST METRO STATION (IF AVAILABLE) Optional**

ENTER ...

**DISTANCE OF METRO STATION FROM SCHOOL (IN KM IF AVAILABLE)**

Optional

ENTER ...

SUBMIT FORM

Copyright © 2018 CBSE (login.aspx). All rights reserved.

Version 2.0

## VITAL INFORMATION

### BOARD EXAM PASS PERCENTAGE FOR LAST 3 YEARS - CLASS 10th

100

92.85

92.5

### BOARD EXAM PASS PERCENTAGE FOR LAST 3 YEARS - CLASS 12th

0

0

0

### PARENT TEACHERS ASSOCIATION AS PER NORMS

YES



### AVAILABILITY OF WELLNESS/ACTIVITY TEACHER

YES



### NAME OF GRIEVANCE/COMPLAINT REDRESSAL OFFICER

Reshma Dsouza

### CONTACT NUMBER OF GRIEVANCE/COMPLAINT REDRESSAL OFFICER

9448618329

### EMAIL ID OF GRIEVANCE/COMPLAINT REDRESSAL OFFICER

bssps@bearyseducation.org

### NAME OF HEAD OF SEXUAL HARASSMENT COMMITTEE

Reshma Dsouza

### NAME OF CONTACT PERSON IN CASE OF EMERGENCY

Haji Master Mahamood

### CONTACT NUMBER OF CONTACT PERSON IN CASE OF EMERGENCY

9880909886

### EMAIL ID OF CONTACT PERSON IN CASE OF EMERGENCY

bssps@bearyseducation.org

### NUMBER OF DOCTORS IN SCHOOL CLINIC

0

### NUMBER OF NURSES IN SCHOOL CLINIC

0

### NUMBER OF BEDS IN SCHOOL CLINIC

1

CONTACT NUMBER OF HEAD OF SEXUAL HARASSMENT COMMITTEE

9448618329

EMAIL ID OF HEAD OF SEXUAL HARASSMENT COMMITTEE

bssps@bearyseducation.org

ACADEMIC SESSION

FROM

JUNE

TO

MARCH

WHETHER THE SCHOOL ACCOUNTS ARE BEING REGULARLY AUDITED?

YES

DO THE TEACHERS AND STAFF GET THEIR SALARY WITHIN FIRST WEEK OF THE MONTH?

YES

DO YOU HAVE EPF FACILITY FOR STAFF?

YES

SALARY PAID TO STAFF THROUGH

CASH  CHEQUE  BANK TRANSFER

INVOLVEMENT OF SCHOOL IN CBSE ACTIVITIES

NEUTRAL

VACATION PERIOD

FROM

APRIL

TO

MAY

DO THE TEACHERS GET PROPER GRADE LIKE PGT/TGT AS PER THE CLASSES THEY ARE ENTITLED TO TEACH?

YES

EPF REGISTRATION NUMBER

KN/UDP/1530766/000

NAME OF BANK WITH WHICH THE SCHOOL HAS SALARY ACCOUNT

Vijaya Bank

UPLOAD AUDITED BALANCE SHEET OF LAST YEAR (STRICTLY FOR REFERENCE ONLY BY CBSE)

Browse...

UPLOAD ACADEMIC CALENDAR (PDF WITH SIZE LESS THAN 1MB)

UPLOAD STAFF STATEMENT(NAME,DESIGNATION,QUALIFICATION,EXPERIENCE & PAY SCALES OF PRINCIPALS & TEACHERS OF DIFFERENT GRADES)

Browse...

Browse...

UPLOAD INFORMATION UPDATE AFFIDAVIT (NOT FOR FIRST TIME USERS)  
(PDF WITH SIZE LESS THAN 1MB)

Browse...

### FEE STRUCTURE OF SCHOOL

CLASS	ADMISSION FEE (in Rupees)	TUITION FEE (in Rupees)	YEARLY DEVELOPMENT CHARGES (in Rupees)	OTHER ANNUAL/MONTHLY CHARGES FOR OTHER FACILITIES (in Rupees)
PRIMARY	5900	650	0	340
MIDDLE	6900	750	0	360
SECONDARY	6900	750	0	440
SENIOR SECONDARY	0	0	0	0

UPLOAD INCOME & EXPENDITURE STATEMENT (STRICTLY FOR REFERENCE ONLY BY CBSE)

Browse...



---

## BEST PRACTICES OF SCHOOL

Daily Morning prayer, Thought for the Day, Briefing about important national and international days and important daily news.

SAVE AND CONTINUE

## ADDITIONAL INFORMATION

U-DISE CODE

29160310805

SCHOOL LOCATED IN RURAL OR URBAN AREA

URBAN

HABITATION NAME/MOHALLA

KODI

VILLAGE NAME (FOR RURAL)/WARD NUMBER (FOR URBAN)

WARD -7

VILLAGE PANCHAYAT NAME (FOR RURAL)

ENTER ...

PIN CODE

576217

CLUSTER RESOURCE CENTER NAME

KUNDAPURA

MUNICIPALITY

KUNDAPURA

IS THIS SCHOOL APPROACHABLE BY ALL WEATHER ROAD

YES

IS THIS A SPECIAL SCHOOL FOR CWSN

NO

IS THIS A SHIFT SCHOOL

NO

IS THIS A RESIDENTIAL SCHOOL

NO

TYPE OF RESIDENTIAL SCHOOL

--SELECT--

IS THIS A RELIGIOUS MINORITY SCHOOL

YES

TYPE OF RELIGIOUS MINORITY SCHOOL

MUSLIM

NUMBER OF ACADEMIC INSPECTIONS DURING LAST ACADEMIC YEAR

CD BLOCK MANDAL/TALUKA NAME

KUNDAPURA

4

EDUCATIONAL ZONE/MANDAL/TALUKA NAME

KUNDAPURA

3

ASSEMBLY CONSTITUENCY

KUNDAPURA

NUMBER OF VISITS BY BLOCK LEVEL OFFICER DURING LAST ACADEMIC YEAR

1

**SCHOOL PARTICULARS FOR ELEMENTARY SCHOOLS ONLY**

NUMBER OF INSTRUCTIONAL DAYS DURING LAST ACADEMIC YEAR

240

NUMBER OF MEETINGS HELD BY SMC DURING LAST ACADEMIC YEAR

3

SCHOOL HOURS FOR CHILDREN PER DAY (CURRENT YEAR)

7

WHETHER SMC PREPARE THE SCHOOL DEVELOPMENT PLAN

YES

SCHOOL HOURS FOR TEACHERS PER DAY (CURRENT YEAR)

8

WHETHER SEPARATE BANK ACCOUNT FOR SMC

NO

IF YES, PROVIDE THESE DETAILS

BANK NAME

ENTER ...

IS CCE BEING IMPLEMENTED

NUMBER OF INSTRUCTIONAL DAYS DURING LAST ACADEMIC YEAR

240

SCHOOL HOURS FOR CHILDREN PER DAY (CURRENT YEAR)

7

SCHOOL HOURS FOR TEACHERS PER DAY (CURRENT YEAR)

8

IS CCE BEING IMPLEMENTED

YES

ARE SCHOOL MANAGEMENT COMMITTEE (SMC) AND SCHOOL  
MANAGEMENT DEVELOPMENT COMMITTEE (SMDC) SAME?

YES

IF NO, UPLOAD DETAILS OF SMDC

Browse...

SUBMIT

Copyright © 2018 CBSE (<http://cbse.nic.in/newsite/index.html>). All rights reserved.

Version 2.0